

## KVM 26-4

Truck mounted concrete pump  
with 4-section universal placing boom



## We Engineer Success

Add the versatility of a short 4-section boom to your fleet with the 26-4. You gain boom flexibility and give-up very little overall reach compared to three section 28-meter models. Plus all of the important features for operator convenience are retained including outrigger controls on both sides of the chassis and the X-style outriggers for stability. This unit is more compact for job-site maneuverability and offers a low

unfolding height. Now you won't turn down indoor work because the 26-4 opens in less than 20-feet overhead height.

If this is your only pump or an addition to your fleet, the 26-4 makes sense for many reasons. Go anywhere, pump almost any mix and place it profitably with the 26-4.

### Generation 3

Schwing proudly offers the concrete pump that will define reliability for the next millennium. Engineering refinements thoroughly tested in the field bring increased performance and smoothness to the pumping process with lower noise levels, higher volume and higher profits for pump owners. Choose from four available pump kits that provide consistent pumping perfor-

mance aided by reliable, all-hydraulic operation and the legendary Schwing Rock Valve. Not only do you receive world-class performance at up to 171 yds./hr. output but also the lowest cost per yard expenses when you operate with the Generation 3 concrete pump.

Parts, service and an experienced sales staff add so much to the value of your concrete pump.

**Pipeline brackets are welded on both sides of boom for secure attachment.**

**Four-section overhead Roll & Fold design allows maximum boom utilization.**

**Common elbows on boom simplify spare parts stocking.**

**Storage for slickline with fold down side boards for easy access.**

**Gradual taper from 7" outlet to 5" boom pipe assures smooth concrete flow.**



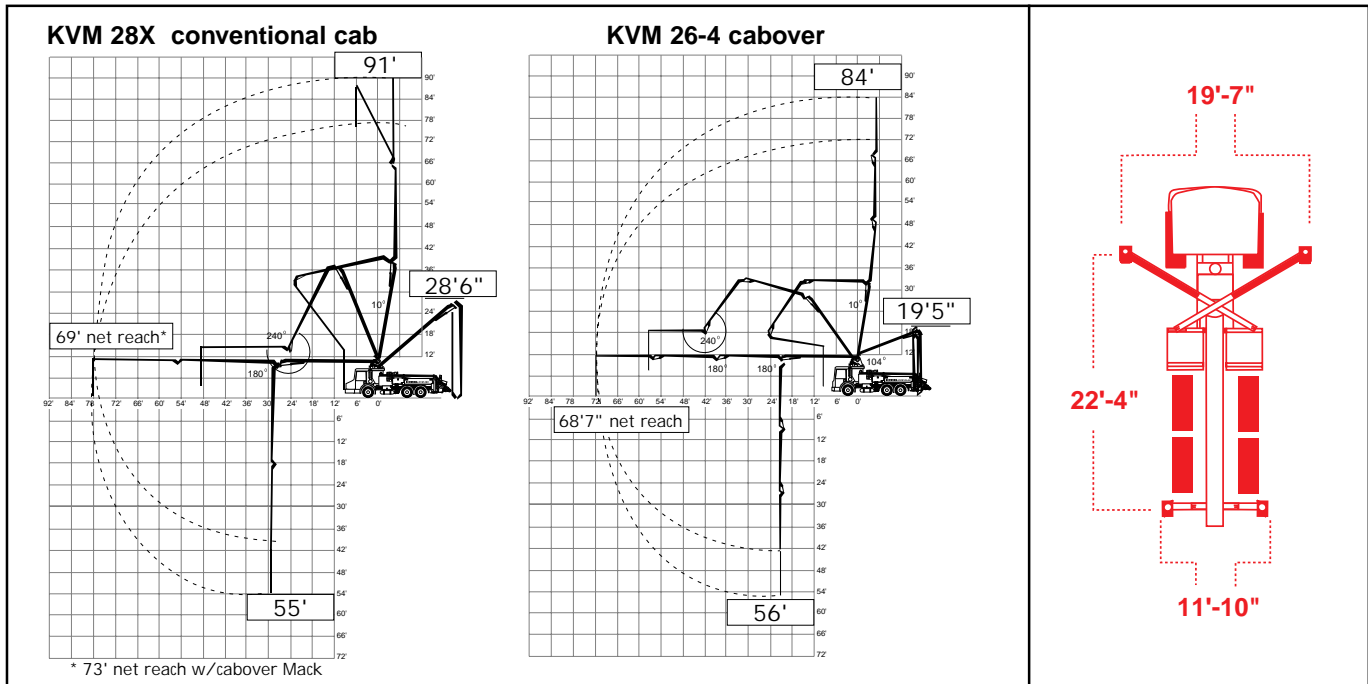
**Manual boom controls near turret for easy access once boom is unfolded.**

**Water system features external pump, high volume tank and outlet near hopper.**

**Hydraulically driven agitator with optional hopper vibrator assures continuous, smooth flow of concrete to the pumping cylinders.**

Only Schwing combines multiple parts stocking locations throughout North America and the most knowledgeable dealer network. Along with our 300,000 square foot manufacturing plant in Minnesota this makes Schwing the unbeatable choice for your long-term future. Look no further - Schwing engineers your success with the latest technology in concrete pumping

# Four-section boom versatility and operator convenience



**Boom Comparison**

Gain the added flexibility and low unfolding height of a four-section boom for indoor work with no net loss in reach over a 28-meter boom on a conventional cab. That's the beauty of the 26-4 - it works more days of the year because of its versatility and loses little over longer three-section booms.

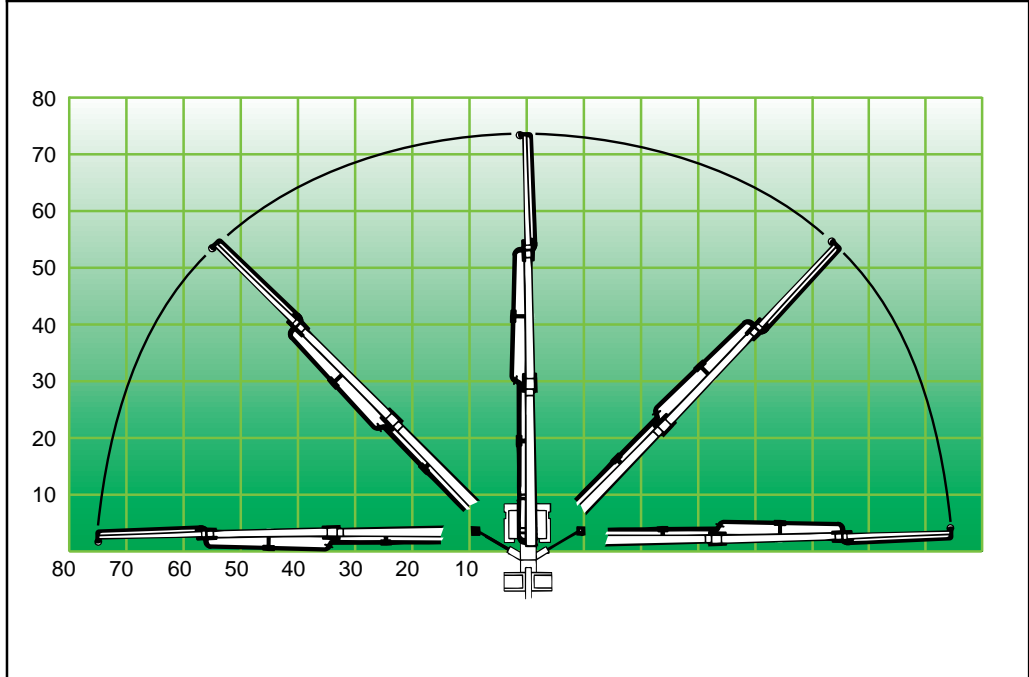
**An all-around performer that compares to longer three section booms.**

Here is the best-kept secret in the Schwing line-up - a four section 26-meter boom with the reach to handle most jobs and the boom flexibility to work in tight quarters. The low 19'5" unfolding height allows indoor work and the 68'7" net horizontal

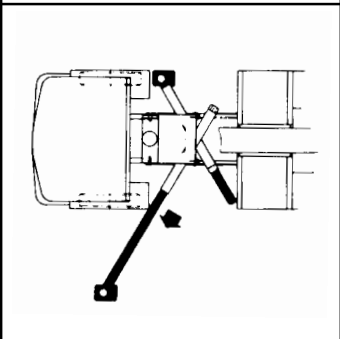
reach compares favorably with 28-meter booms that are mounted on conventional trucks. Because of the added flexibility at the 26-4's folding points you can snake this boom into and around obstructions. This means added work when the job moves indoors due to wet weather or enclosed structures.

**"X" style outriggers**

Proven on larger Schwing models, "X" style outriggers combine manual and hydraulic deployment for efficiency and operator convenience. Now you can shoot the outriggers straight out to allow set-up in areas where obstructions prevent conventional stabilizers from swinging out.



Front legs power out and down hydraulically. Rears easily extend manually and power down hydraulically to provide a stable platform for high volume pumping. Controls on both sides of the chassis add safety and speed to set-up. Convenient pad storage further enhances operator efficiency.



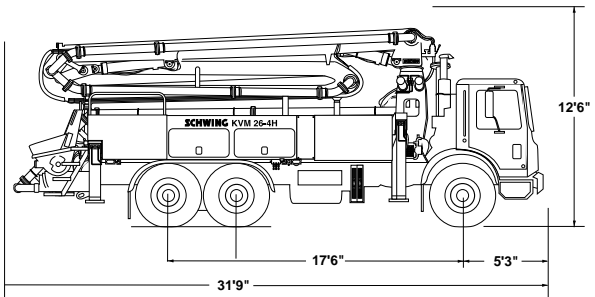


Pump Kits on 26-4	900	1200	2023-4
Theor. Concrete Output (cu./yds/hr)	117	171	170
Max. Pressure on Concrete (psi)	870	759	1007
Max. Strokes/Min.	30	26	26
Pump Cylinder Diameter (in.)	8	9	9
Pump Cylinder Stroke Length (in.)	63	79	79
Differential Cylinder Size (in.)	4.7	4.9	5.1
Max. Aggregate Size (in.)	2.5	2.5	2.5
Hydraulic System Pressure (psi)	4350	4350	5075

Specifications are subject to change without prior notice

Boom Specifications 26-4	U.S.	Metric
Pipeline Diameter	5"	125 mm
Vertical Reach	85'7"	26 m
Net Horizontal Reach	68'7"	21 m
Reach from Slewing Axis	72'7"	22 m
Minimum Unfolding height	19'5"	5.9 m
Section Length	First Section 21'	6.4 m
	Second Section 17'5"	5.3 m
	Third Section 17'5"	5.3 m
	Tip Section 16'9"	5.1 m
Slewing Range	370°	370°
End hose length	12.5'	4 m

Specifications are subject to change without prior notice



**SCHWING**  
**AMERICA INC.**

5900 Centerville Road  
St. Paul, MN 55127  
Tel 651-429-0999  
Fax 651-429-3464  
www.schwing.com

Represented by